

## The reconnaissance robot that flies itself, no pilot necessary.



### Autonomous

Exyn robots fly without a pilot in-the-loop, executing mission objectives intelligently.



### Self Contained

Execute missions with onboard intelligence, no need for consistent communication.



### Real-Time Intelligence

Provide situational awareness in real-time, no distracting operators.



### Infrastructure Free

No need for infrastructure such as maps, GPS, controller, or communications



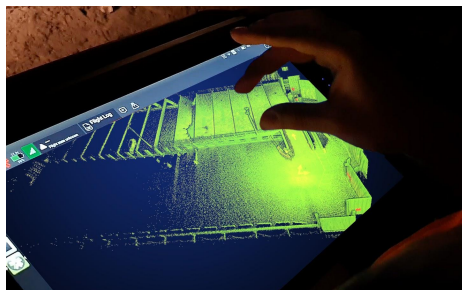
## Focus on the Fight, not the Flight

- ✓ Faster, safer mission execution
- ✓ See beyond the operator's line of sight in real-time
- ✓ Access dangerous, complex, and multi-story environments
- ✓ Eliminate human error in flight or operation
- ✓ Prioritize focus on the mission, not piloting the drone
- ✓ Generate 3D models and video in common formats (i.e. \*.ply, \*.laz, \*.mp4)

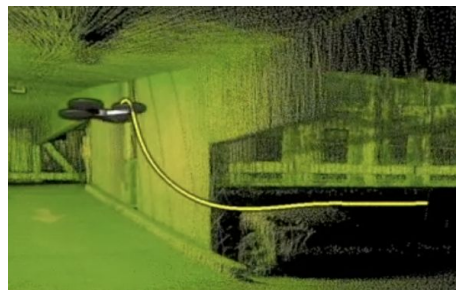
## System Operation

### Mission Steps

#### 1. Plan Mission / Deploy Robot



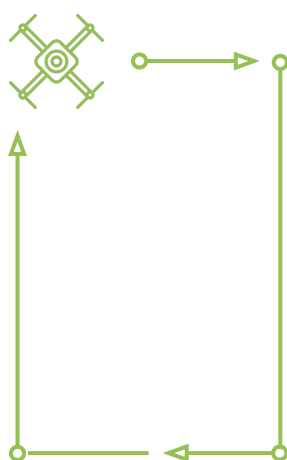
#### 2. Mission Execution



#### 3. Send Real-Time Data (Object ID+3D model)



#### 4. Complete Mission / Return Home



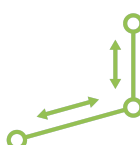
### System Benefits

- No Pilot Needed
- Real-Time Intel
- 3-D Mapping & Navigation
- Navigate in 3D, multi-floor or unstructured
- Visual/IR/Thermal Imagery
- Georeferencing Capability
- ML Classification + 3D location
- Sensor Fusion (Dosimeter, etc)
- Affordable Price Point

### Mission Modes



**Scoutonomy**  
Fully Autonomous  
3-Dimensional Exploration



**Mission Planner**  
Pre Defined Point-to-Point  
Navigation off Localized Map  
(Press Play and Go)

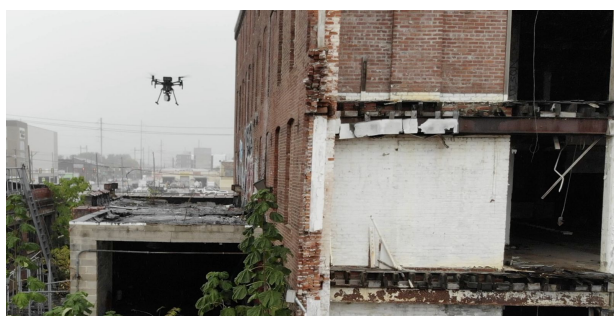


## Use Cases / Environments

### Use Cases

- Street-Level ISR + Mapping
- Real-Time tactical ISR
- Room-Entry / Breaching
- Industrial Inspection
- Industrial Monitoring
- Tunnel / Cave Exploration
- Perimeter / Facility Security
- Infrastructure Inspection
- VR data model capture

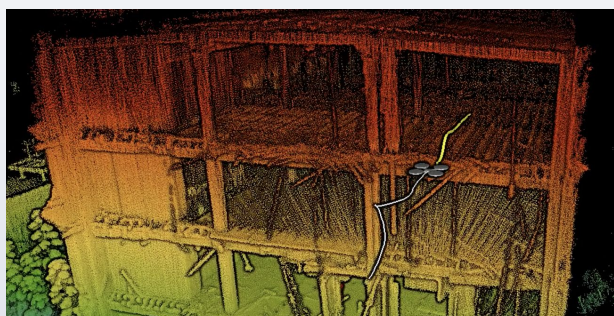
### Dense Urban ISR



Autonomous Beyond-Line-Of-Sight Operation

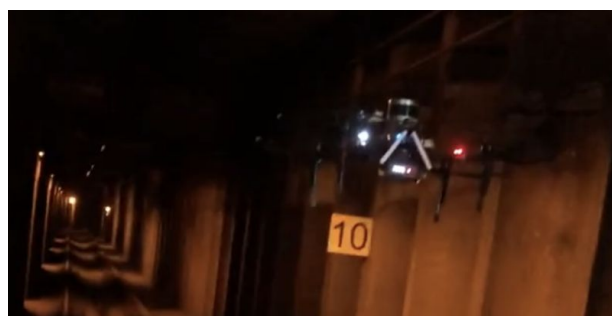


Large Coverage Area

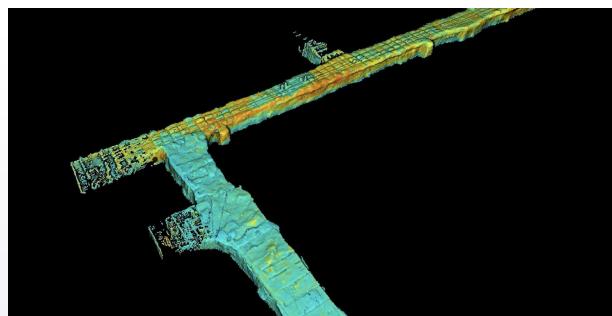


Outdoor to Indoor Exploration

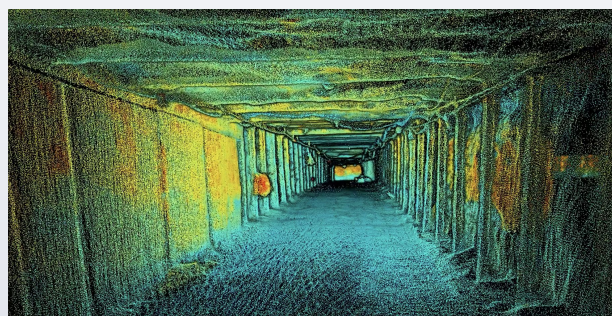
### Subterranean ISR



Complex Tunnel Network Exploration



Survey Grade Data Extraction



Unparalleled Detail Capture